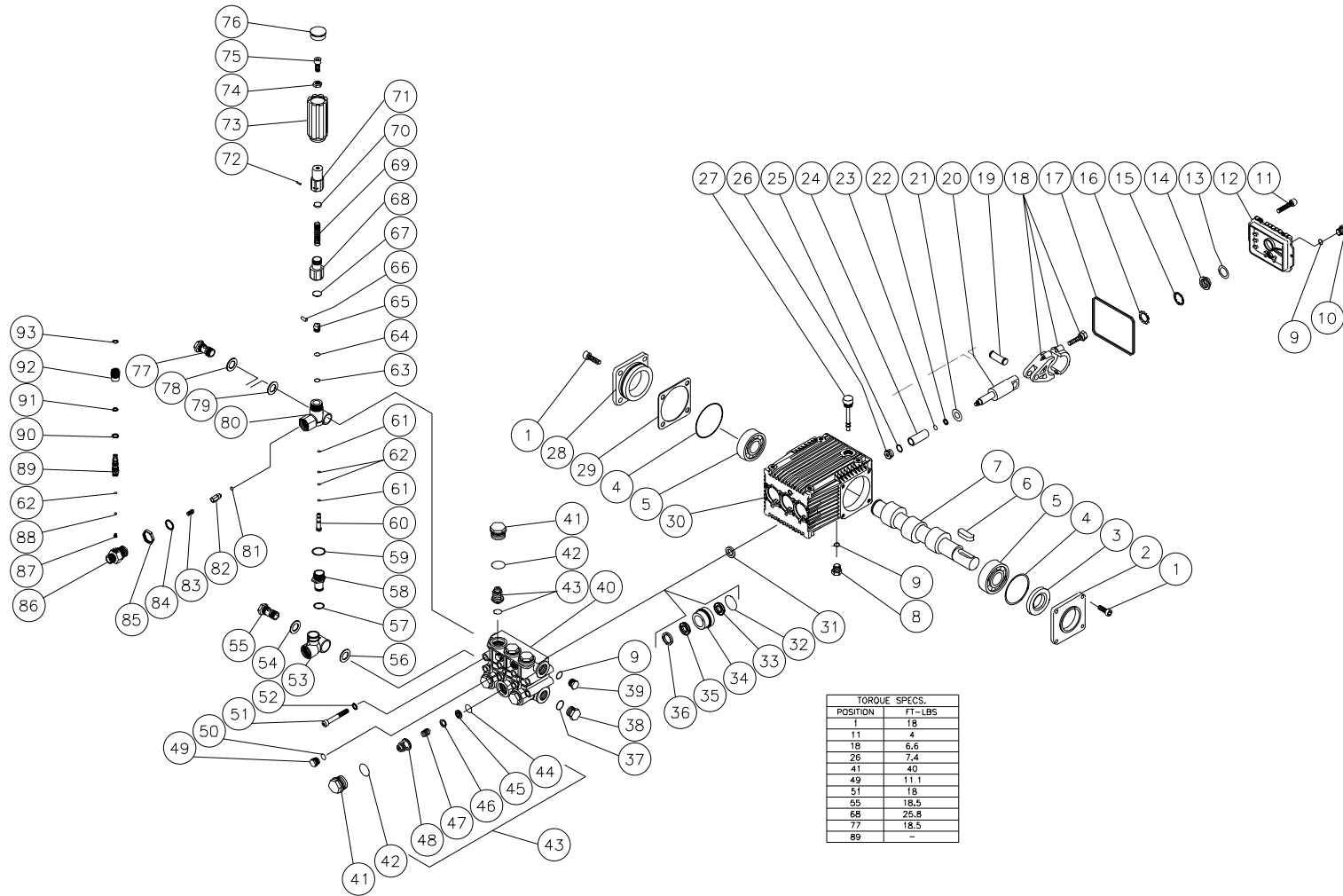


PUMP ASSEMBLY (3-0150)



3-0150-012099-RD

PUMP ASSEMBLY (3-0150)											
REF. #	DESCRIPTION	PART #	QTY.	REF. #	DESCRIPTION	PART #	QTY.	REF. #	DESCRIPTION	PART #	QTY.
1	Bolt	27-8884	8	34	Packing Retainer	46-0708	3	68	Guide Spring	8-0474	1
2	Shaft Cover	46-0691	1	35	V-Packing (See 70-0177)	N/A Sep.	3	69	Spring	49-0132	1
3	Oil Seal	26-0188	1	36	Support Ring (See 70-0178)	N/A Sep.	3	70	Spring Button	8-0475	1
4	O-Ring	25-0380	2	37	O-ring	25-0372	1	71	Adjustment Barrel	8-0476	1
5	Roller Bearing	48-0061	2	38	Plug	39-0088	1	72	Pin	8-0477	1
6	Key	43-0091	1	39	Plug	39-0086	1	73	Unloader Knob	7-0141	1
7	Crankshaft	46-0692	1	40	Manifold	46-0711	1	74	Nut	30-3025	1
8	Plug	39-0102	1	41	Valve Cap	39-0095	6	75	Bolt	27-8433	1
9	O-ring	25-0325	1	42	O-ring	25-0160	6	76	Cap	7-0142	1
10	Plug	39-0086	3	43	Single Valve Assembly (Inc. 44-48) (See 70-0179)	N/A Sep.	6	77	Adaptor	8-0448	1
11	Bolt	27-8885	1	44	O-ring	25-0386	6	78	Washer	8-0449	1
12	Crankcase Cover	46-0812	6	45	Valve Seat (See 70-0179)	N/A Sep.	6	79	Washer	8-0450	1
13	O-ring	25-0370	1	46	Valve Plate (See 70-0179)	N/A Sep.	6	80	Unloader Body	8-0451	1
14	Oil Sight Glass	46-0670	1	47	Valve Spring (See 70-0179)	N/A Sep.	6	81	O-ring	25-0437	1
15	Reflector	46-0824	1	48	Valve Cage (See 70-0179)	N/A Sep.	6	82	Check Valve	8-0454	1
16	Retainer	46-0671	1	49	Plug	39-0096	2	83	Spring	49-0123	1
17	O-ring	25-0398	1	50	O-ring	25-0387	2	84	O-ring	25-0372	1
18	Connecting Rod	46-0696	3	51	Bolt	27-8440	8	85	Tightener Nut	8-0497	1
19	Piston Pin	46-0698	3	52	Lockwasher	29-0154	8	86	Injector Adapter	8-0498	1
20	Plunger Rod	46-0699	3	53	Inlet Bypass Adaptor	8-0437	1	87	Detergent Injector Spring (See 70-0232)	N/A Sep.	1
21	Washer	46-0700	3	54	Washer	8-0440	1	88	Ball (See 70-0232)	N/A Sep.	1
22	Backup Ring	25-0404	3	55	Adaptor	8-0438	1	89	Barb	8-0499	1
23	O-ring	25-0382	3	56	Washer	8-0439	1	90	O-ring (See 70-0232)	N/A Sep.	1
24	Piston	46-0701	3	57	O-ring (See 8-0456)	N/A Sep.	1	91	O-ring (See 70-0232)	N/A Sep.	1
25	Washer	26-0191	3	58	Nipple	8-0441	1	92	Knob	7-0152	1
26	Nut	30-6020	3	59	O-ring (See 70-0179)	N/A Sep.	1	93	Snap Ring (See 70-0232)	N/A Sep.	1
27	Oil Dipstick	39-0090	1	60	Piston	8-0442	1		High Pressure Seal Kit (Inc. 3 each 32, 33, 35)	70-0177	
28	Bearing Cap/ Support	46-0703	1	61	Backup Ring (See 70-0180)	N/A Sep.	2		Support Ring Kit (Includes 3 each 36)	70-0178	
29	Shim (Quantity Varies 1-3)	46-0704	-	62	O-ring	25-0371	3		Valve Kit (Includes 6 each 44-48)	70-0179	
-	Shim (Quantity Varies 1-3)	46-0705	-	63	O-ring (See 70-0180)	N/A Sep.	1		Unloader Kit (Inc. 53-83)	8-0456	
30	Crankcase	46-0811	1	64	Backup Ring (See 70-0180)	N/A Sep.	1		Unloader Repair Kit (Inc. 57, 59, 61-64, 81)	70-0180	
31	Oil Seal	26-0190	3	65	Poppet	8-0443	1		Injector Kit (Inc. 62, 84-93)	70-0232	
32	O-ring	25-0384	3	66	Pin	8-0444	1		Injector Repair Kit (See 62, 84, 87, 88, 90, 91, 93)	70-0233	
33	Low Pressure Seal (See 70-0177)	N/A Sep.	3	67	Spring Button	8-0445	1				